



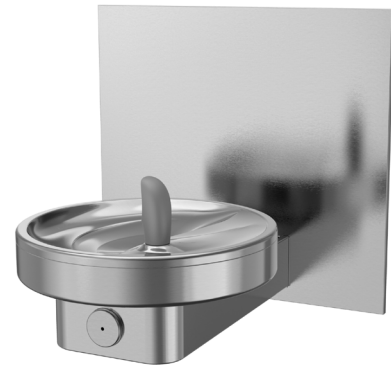
M140R.
Manual, Non-Refrigerated
Drinking Fountain

M140R is the compact modular drinking fountain within the OASIS Radii™ series.

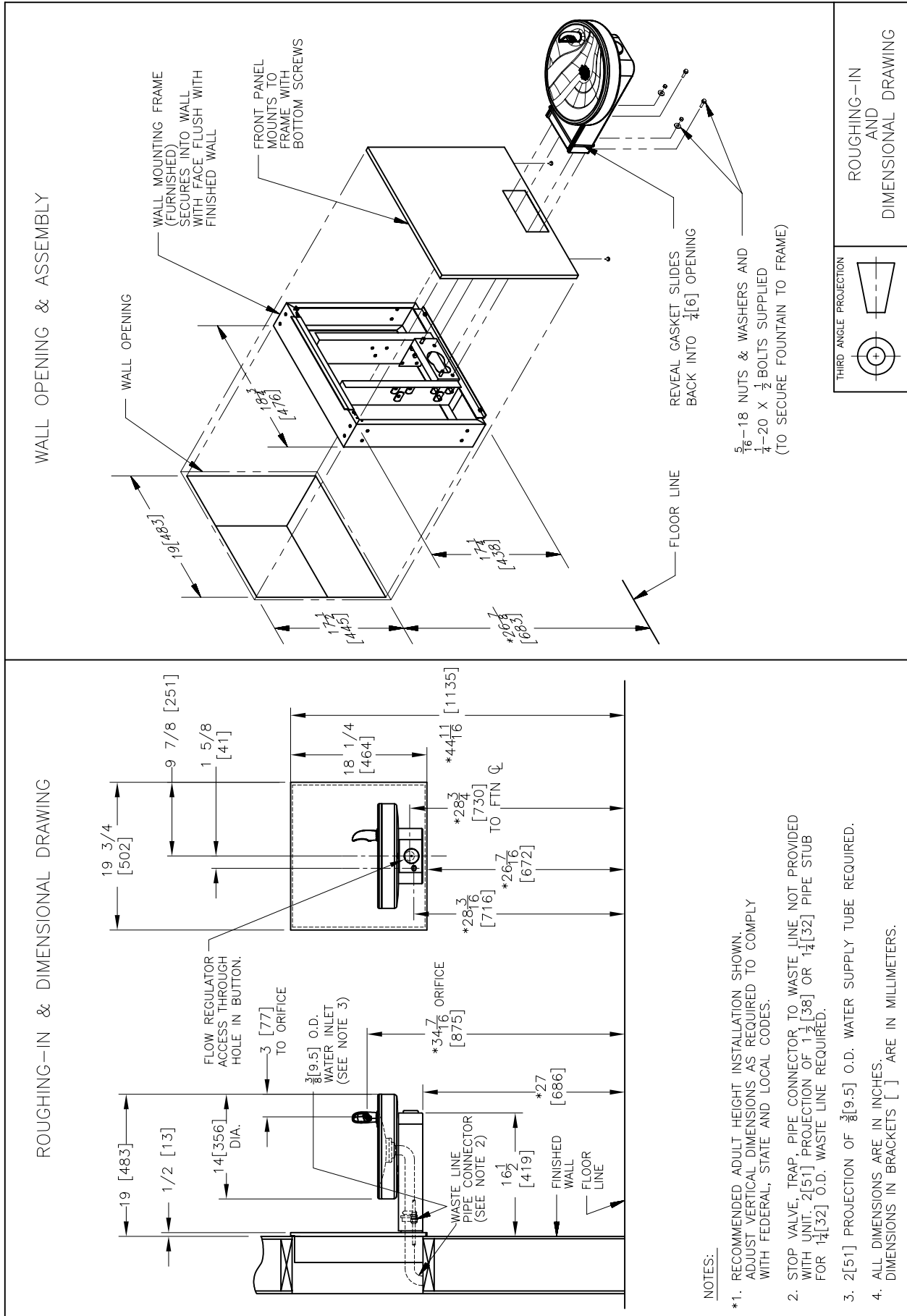
M140R delivers ambient drinking water. This drinking fountain is manually activated via the antimicrobial touch-button.

Complies with ANSI A117.1 and ADA. Shall comply with all relevant CE directives (LVD , EMC, RoHS). Shall comply with ANSI/NSF 61.

Suitable for public building, gymnasiums, sports complexes, hospitals, schools, and offices.



MODEL CODE	M140R
ACTIVATION	Mechanical (touch-button)
FILTRATION	Green Filter (optional), Built-in 100 micron strainer
DISINFECTION	Ultra Blu V (optional)
AUTO-OFF WATER FLOW	No
DRAINAGE TYPE	Built in drain, Removable drip tray
EXTERIOR	Antimicrobial ABS Plastic, Antimicrobial copper touch points, Brushed Stainless Steel
CHASSIS	Heavy Duty Galvanised Steel
DIMENSIONS	209(H) x 356(W) x 483(D) mm
NET WEIGHT	8 kg
POWER SUPPLY	-
COOLING PERFORMANCE	Non-Refrigerated
FULL LOAD AMPS	-
RATED WATTS	-
ENERGY SYSTEM	-
COUNTRY OF ORIGIN	Mexico
CERTIFICATIONS	ANSI/NSF 61, CABO/ANSI A117.1, ADA, CE (LVD, EMC, RoHS)
WARRANTY	1 Year

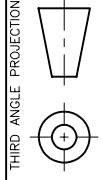


ROUGHING-IN & DIMENSIONAL DRAWING

WALL OPENING & ASSEMBLY

NOTES:

- *1. RECOMMENDED ADULT HEIGHT INSTALLATION SHOWN. ADJUST VERTICAL DIMENSIONS AS REQUIRED TO COMPLY WITH FEDERAL, STATE AND LOCAL CODES.
- 2. STOP VALVE, TRAP, PIPE CONNECTOR TO WASTE LINE, NOT PROVIDED WITH UNIT. 2[51] PROJECTION OF 1 1/2 [38] OR 1 1/4 [32] PIPE STUB FOR 1 1/4 [32] O.D. WASTE LINE REQUIRED.
- 3. 2[51] PROJECTION OF 3/8 [9.5] O.D. WATER SUPPLY TUBE REQUIRED.
- 4. ALL DIMENSIONS ARE IN INCHES. DIMENSIONS IN BRACKETS [] ARE IN MILLIMETERS.



THIRD ANGLE PROJECTION

ROUGHING-IN AND DIMENSIONAL DRAWING

