



F140R
Manual, Non-Refrigerated
Drinking Fountain

F140R is the compact modular drinking fountain within the OASIS Radii™ series.

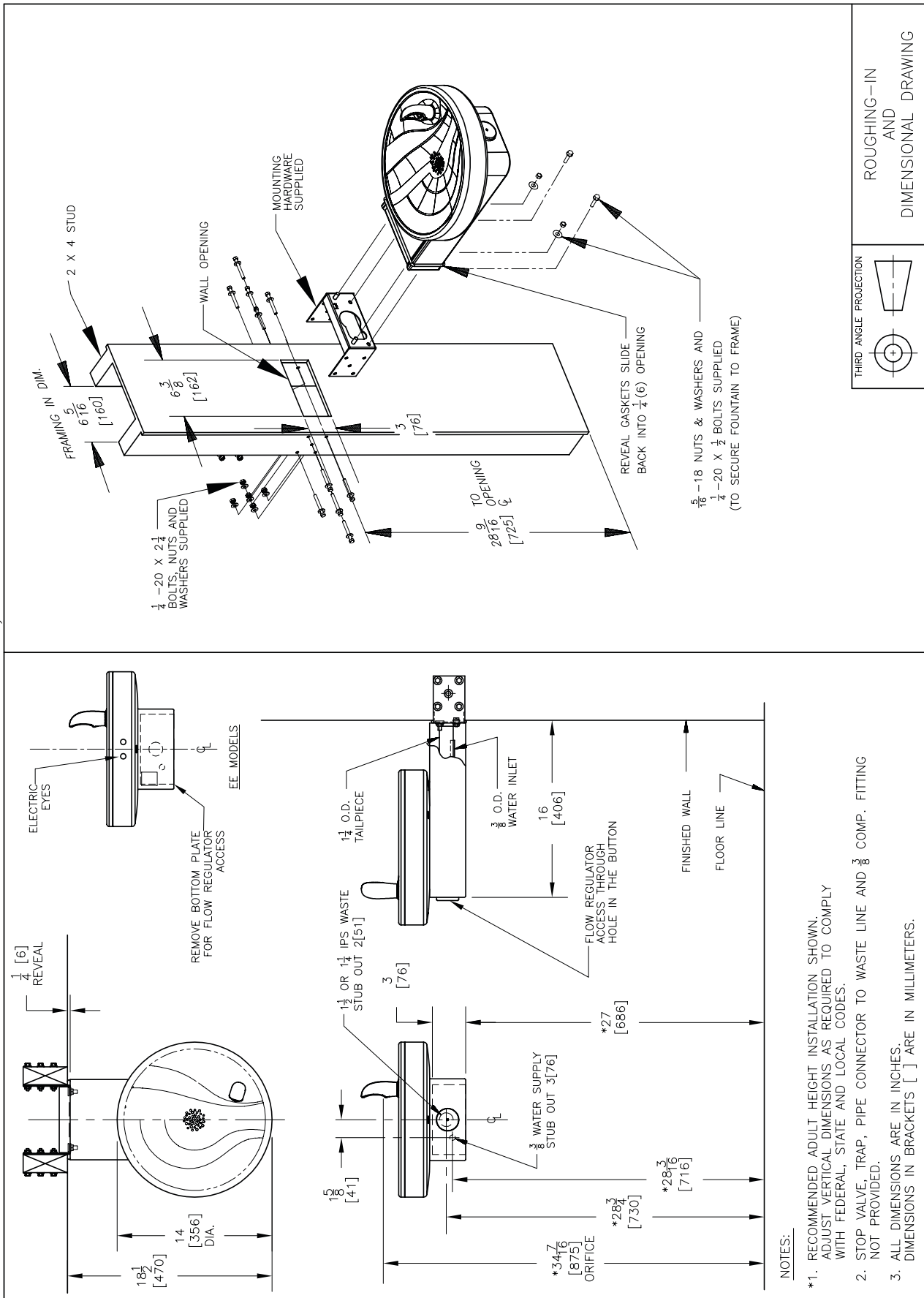
M140R delivers ambient drinking water. This drinking fountain is manually activated via the antimicrobial touch-button.

Complies with ANSI A117.1 and ADA. Shall comply with all relevant CE directives (LVD , EMC, RoHS). Shall comply with ANSI/NSF 61.

Suitable for public building, gymnasiums, sports complexes, hospitals, schools, and offices.



MODEL CODE	F140R
ACTIVATION	Mechanical (touch-button)
FILTRATION	Green Filter (optional), Built-in 100 micron strainer
DISINFECTION	Ultra Blu V (optional)
AUTO-OFF WATER FLOW	No
DRAINAGE TYPE	Built in drain, Removable drip tray
EXTERIOR	Antimicrobial ABS Plastic, Antimicrobial copper touch points, Brushed Stainless Steel
CHASSIS	Heavy Duty Galvanised Steel
DIMENSIONS	209(H) x 356(W) x 470(D) mm
NET WEIGHT	8.2 kg
POWER SUPPLY	-
COOLING PERFORMANCE	Non-Refrigerated
FULL LOAD AMPS	-
RATED WATTS	-
ENERGY SYSTEM	-
COUNTRY OF ORIGIN	Mexico
CERTIFICATIONS	ANSI/NSF 61, CABO/ANSI A117.1, ADA, CE (LVD, EMC, RoHS)
WARRANTY	1 Year



ROUGHING-IN AND DIMENSIONAL DRAWING

